



UNIVERSITÀ
DEGLI STUDI
DI UDINE

Università degli studi di Udine

Glioma Associated Stem Cells (GASCs) Isolation and Culture.

Original

Availability:

This version is available <http://hdl.handle.net/11390/1096003> since 2017-02-27T09:09:44Z

Publisher:

Published

DOI:

Terms of use:

The institutional repository of the University of Udine (<http://air.uniud.it>) is provided by ARIC services. The aim is to enable open access to all the world.

Publisher copyright

(Article begins on next page)

Glioma Associated Stem Cells (GASCs) Isolation and Culture

Evgenia Bourkoura¹, Damiano Mangoni¹, Federica Caponnetto¹, Tamara Ius², Miran Skrap², Antonio Paolo Beltrami¹ and Daniela Cesselli^{1*}

¹Department of Medical and Biological Sciences, University of Udine, Udine, Italy;

²Department of Neurosurgery, University Hospital of Udine, Udine, Italy

*For correspondence: daniela.cesselli@uniud.it

[Abstract] Glioma Associated Stem Cells (GASCs) represent a population of non-tumorigenic multipotent stem cells hosted in the microenvironment of human gliomas. *In vitro*, these cells are able, through the release of exosomes, to increase the biological aggressiveness of glioma-initiating cells. The clinical importance of this finding is supported by the strong prognostic value associated with the GASCs surface immunophenotype thus suggesting that this patient-based approach can provide a groundbreaking method to predict prognosis and to exploit novel strategies that target the tumor stroma (Bourkoura *et al.*, 2014).

Materials and Reagents

1. Hank's balanced salt solution (HBSS) without calcium and magnesium (Sigma-Aldrich, catalog number: H2387)
2. Collagenase type II (Sigma-Aldrich, catalog number: C6885-500MG)
3. Fetal bovine serum (FBS) (EuroClone, catalog number: ECS0180L)
4. Trypan blue (Sigma-Aldrich, catalog number T6146-5G)
5. Dulbecco's phosphate buffered saline (D-PBS) (Life Technologies, catalog number: 14190-250)
6. Fibronectin from human plasma 0.1% solution (cell culture tested) (Sigma-Aldrich, catalog number: F0895)
7. Modified Eagle's medium (MEM) Joklik without NaHCO₃ (Sigma-Aldrich, catalog number: M0518)
8. Hepes (powder) (Sigma-Aldrich, catalog number: H3375)
9. L-glutamine (Sigma-Aldrich, catalog number: G7513)
10. Taurine (Sigma-Aldrich, catalog number: T0625)
11. Penicillin-streptomycin (100x solution stabilized, sterile-filtered, suitable for cell culture) (Sigma-Aldrich, catalog number: P4333-100ML)
12. Insulin (Sigma-Aldrich, catalog number: I5523-50MG)
13. Dulbecco's modified Eagle's medium (DMEM) low glucose (Life Technologies, Gibco®, catalog number: 31600-091)
14. MCDB-201 (Sigma-Aldrich, catalog number: M6770)
15. Linoleic acid-bovine serum albumin (BSA) (Sigma-Aldrich, catalog number: L9530)

16. Dexamethasone (powder) (Sigma-Aldrich, catalog number: D2915)
17. Ascorbic acid-2 phosphate (powder) (Sigma-Aldrich, catalog number: A8960)
18. 100x insulin-transferrin-selenium (ITS) (Life Technologies, Gibco®, catalog number: 41400-045)
19. Stem cell tested fetal bovine serum (Stem Cells Technologies, catalog number: 10M37180)
20. Human platelet derived growth factor-BB (hPDGF-BB) (Pepro Tech, catalog number: 100-14B)
21. Human epidermal growth factor (hEGF) (Pepro Tech, catalog number: AF-100-15)
22. TrypLE-express dissociation reagent (Life Technologies, Gibco®, catalog number: 12605)
23. Basic buffer (BB) (see Recipes)
24. Incubation buffer (IB) (see Recipes)
25. 0.025% Collagenase type II (see Recipes)
26. 0.4% Trypan blue solution (see Recipes)
27. Fibronectin-coated 100 mm petri dish (see Recipes)
28. Multipotent adult stem cell (MASC) medium (see Recipes)

Equipment

1. Sterile tissue culture dishes 100 x 20 mm style (BD Biosciences, Falcon®, catalog number: 353003)
2. Scalpel blades (Sigma-Aldrich, catalog number 27046)
3. Sterile serological transfer pipettes
4. Serological pipettes
5. Sterile Falcon tubes
6. Mesh filter (70 µm) (BD Biosciences, Falcon®, catalog number 352350)
7. Biological hood (Faster, model: Safe FAST Elite)
8. Agitation rotor (Celbio, model: MINI OVEN)
9. Burkert counting chamber (Sigma-Aldrich, catalog number: Z359629-1EA)
10. 37 °C, 5% CO₂, 5% O₂ force air incubator (New Brunswick, model: Galaxy 170 R)
11. Centrifuge (Heraeus Instruments, model: Megafuge 1.0 R)
12. Light microscope (Leica Microsystems, model: DMIL)

Procedure

- A. Isolation and primary culture of primitive cells from human glioma (see Video 1)
 1. Under biological hood, place the glioma sample into sterile 100 mm Petri dish and cut the fragments into ~1 mm pieces using scalpels.
 2. Re-suspend glioma fragments into 3-5 ml of BB and transfer them into a 15 ml Falcon

tube.

3. Let the fragments deposit to the bottom of the 15 ml Falcon tube by gravity at room temperature. If fragments will not deposit into the bottom, centrifuge the suspension at $300 \times g$ for 1 min.
4. Remove the supernatant and re-suspend the volume of the pellet in an equal volume of collagenase solution (0.025%).
5. Incubate the suspension for 5 min in an agitation rotor at 37°C .
6. At the end of the incubation period, gently shake the bottom of the Falcon tube and add 5 ml of IB and gently pipette it with a 10 ml serological pipette for 4-5 min.
7. Pre-wet a $70\ \mu\text{m}$ mesh filter by filtering 5 ml of sterile, fresh HBSS using a 5 ml sterile serological pipette into a 50 ml Falcon tube.
8. Filter the cell suspension through the pre-wet $70\ \mu\text{m}$ mesh filter.
9. Centrifuge the filtered suspension at $500 \times g$ for 5 min at room temperature and re-suspend it into 1 ml of MASC medium.
10. Count the cells using the Burkser Counting chamber: Remove $10\ \mu\text{l}$ of cell suspension, mix it with an equal volume of 0.4% Trypan blue in D-PBS and apply $10\ \mu\text{l}$ of diluted cells to the Burkser chamber. Count at least four squares and calculate the number of cells by multiplying the medium value obtained for 2×10^4 . You will obtain the total amount of cells/ml of cell suspension.
11. Seed $5,000\ \text{cells}/\text{cm}^2$ into fibronectin-coated dishes and culture them in MASC medium at 37°C in a 5% CO_2 , 5% O_2 force air incubator.

B. Sub-culture of glioma associated stem cells (GASCs)

1. Take out from the incubator (5% CO_2 , 5% O_2 , at 37°C) the dish containing the cells that has to be split. Check at the microscope that cells have reached 80% of confluence (7-10 days after seeding).
2. Transfer the dish below the biological hood, open the dish and discard the supernatant with a 10 ml sterile serological pipette.
3. Add 5 ml of HBSS or D-PBS to the dish, gently move the plate in order to cover the entire surface, and then remove the HBSS or D-PBS. Repeat the washing procedure. Remove carefully the HBSS or D-PBS.
4. Add 2 ml of TrypLE Express solution for each dish. Since cells will detach very fast, check continuously at the microscope the process in order to avoid over-digestion.
5. When cells are finally detached, add 5 ml of HBSS or D-PBS to dilute the TrypLE Express solution.
6. Re-suspend the cells by gently pipetting them through a 10 ml sterile serological pipette. To recover all cells from the dishes, wash the Petri dish one more time, by adding 3 ml of fresh sterile HBSS or D-PBS and put the solution in the Falcon Tube containing the previous obtained cell suspension.
7. Centrifuge the cell suspension at $500 \times g$ for 5 min at room temperature, discard the

supernatant and re-suspend the cell pellet in 1 ml of MASC medium.

8. Seed the cells onto fibronectin-coated dishes at the concentration of 3,500 cells/cm².
9. Change the medium every three days. Split the cells when they will reach 80% confluence.

Representative data

Video 1. GASC isolation procedure. Video 1 is representing the steps from 1 to 11 of the GASCs isolation protocol.

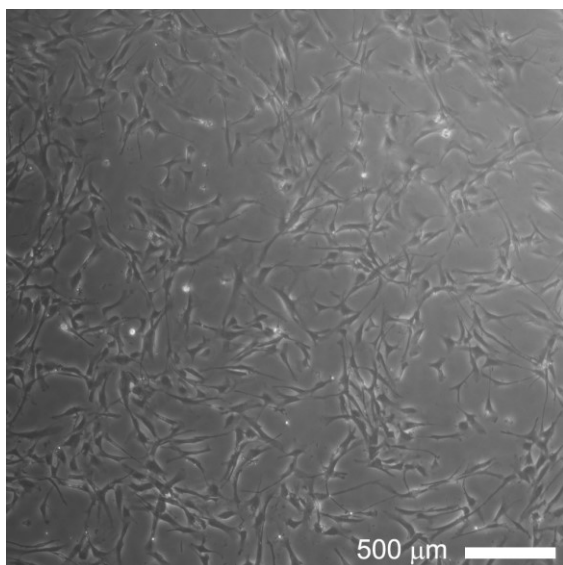
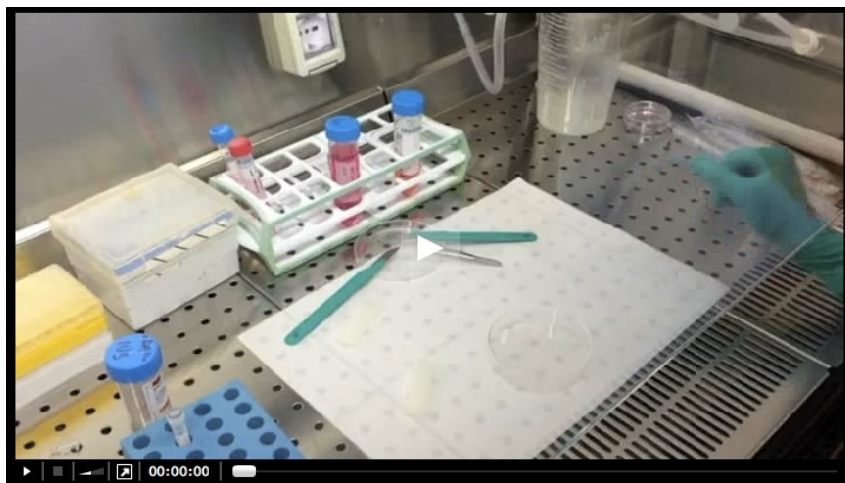


Figure 1. Phase contrast image of GASCs at the third passage in culture

Recipes

1. Basic buffer (BB)
 - 11 g MEM Joklik without NaHCO₃ (powder)
 - 4.7 g Hepes (powder)

- 0.3 g L-glutamine
- 0.25 g taurine
- 5 ml penicillin-streptomycin
- Insulin 20 U/L
- Add non-pyrogenic dH₂O up to 900 ml and adjust the pH to 7.3
- Add non-pyrogenic dH₂O up to 1,000 ml and filter sterilize (0.2 µm)
- Stored at 4 °C
2. Incubation buffer (IB)
Add 10% of fetal bovine serum to HBSS
Stored at 4 °C
3. 0.025% Collagenase type II
0.025 g Collagenase type II
Add 10 ml of BB and carefully pipette for 2-3 min
Add BB up to 100 ml, filter sterilize and stored at -20 °C
4. 0.4% Trypan blue solution
0.1 g Trypan blue
Add 25 ml sterile 1x D-PBS
Vortex and stored at room temperature
5. Fibronectin-coated 100 mm petri dish
For each 100 mm petri dish, add 5 µl 0.1% fibronectin in 1 ml of HBSS
Carefully cover the bottom of the dish with the fibronectin solution and keep for at least 20 min at room temperature
Remove the exceeding solution from the dish
6. Multipotent adult stem cell (MASC) medium
Base medium (60% DMEM low glucose + 40% MCDB-201)
2% stem cell tested fetal bovine serum
10 ng/ml hPDGF-BB
10 ng/ml hEGF
1 mg/ml linoleic acid-BSA
10⁻⁹ M dexamethasone
1x ITS 100x
10⁻⁴ M ascorbic acid-2 phosphate
1x penicillin-streptomycin 100x
Adjust the pH to 7.3
Filter sterilize (0.2 µm) and stored at 4 °C

Acknowledgments

FIRB Accordi di programma 2011 Pr. RBAP11Z4Z9. FIRB accordi di programma 2011 Pr. RBAP11ETKA_007. Programma per la Cooperazione Transfrontaliera Italia-Slovenia

2007-2013. Title: "Identificazione di nuovi marcatori di cellule staminali tumorali a scopo diagnostico e terapeutico"; AIRC 5 per mille Special program 2011, Pr. 12214. Project ERC- 7FP SP 2 IDEAS QUIDPROQUO G.A. n. 269051. The protocol was adopted from Bourkoura *et al.* (2014).

References

1. Andolfi, L., Bourkoura, E., Migliorini, E., Palma, A., Pucer, A., Skrap, M., Scoles, G., Beltrami, A. P., Cesselli, D. and Lazzarino, M. (2014). [Investigation of adhesion and mechanical properties of human glioma cells by single cell force spectroscopy and atomic force microscopy](#). *PLoS One* 9(11): e112582.
2. Beltrami, A. P., Cesselli, D., Bergamin, N., Marcon, P., Rigo, S., Puppato, E., D'Aurizio, F., Verardo, R., Piazza, S. and Pignatelli, A. (2007). [Multipotent cells can be generated *in vitro* from several adult human organs \(heart, liver, and bone marrow\)](#). *Blood* 110(9): 3438-3446.
3. Bourkoura, E., Mangoni, D., Ius, T., Pucer, A., Isola, M., Musiello, D., Marzinotto, S., Toffoletto, B., Sorrentino, M., Palma, A., Caponnetto, F., Gregoraci, G., Vindigni, M., Pizzolitto, S., Falconieri, G., De Maglio, G., Pecile, V., Ruaro, M. E., Gri, G., Parisse, P., Casalis, L., Scoles, G., Skrap, M., Beltrami, C. A., Beltrami, A. P. and Cesselli, D. (2014). [Glioma-associated stem cells: a novel class of tumor-supporting cells able to predict prognosis of human low-grade gliomas](#). *Stem Cells* 32(5): 1239-1253.